



WELCOME TO SKY RANCH FAMILY CAMP!

Dear Horn Creek Family,

Thank you for the awesome privilege of hosting your family at Sky Ranch Horn Creek this summer! Our desire is to provide a vacation full of incredible activities and family connection time to strengthen your relationship with God and your family. We believe that now, more than ever, an environment focused on family fun, community, and our relationships with God and each other is so valuable and necessary. We have prepared an intentional encounter that offers a relaxed and hospitable atmosphere, allowing you the flexibility necessary for your family to have the best experience possible. Our Family Camp team is ready to serve your family while you are making memories that will last a lifetime.

To help you prepare for Family Camp, this booklet contains up-to-date information, and other materials to ensure you have a safe, fun-filled, enriching adventure this summer. We encourage you to read over this information carefully, and please do not hesitate to contact Guest Services at 800.962.2267 with any questions you may have.

With locations in Texas, Colorado (Horn Creek and Ute Trail), and Oklahoma, our desire is to serve your family with excellence and purposeful moments that create an experience which will forever enhance your family bond through Christ. We look forward to welcoming you and your precious family to Sky Ranch Horn Creek very soon!

In His Grip,

A handwritten signature in black ink that reads "Linda". The script is fluid and cursive, with a large initial "L".

Linda S. Paulk
President and CEO of Sky Ranch Christian Camps

TABLE OF CONTENTS

Getting Ready for Camp 3

 Packing List 3

 Family Camp 2021 Dates 3

Directions 4

Climate and Weather 4

Ranch Bank - Planning Ahead! 5

During Camp Week 6

Activities at Camp 7

Night Events 8

Other Important Things to Know 9

Off-Camp Adventure Day 10



GETTING READY FOR CAMP

PACKING LIST

WHAT TO BRING

TOILETRIES*

- ☐ Toothbrush
- ☐ Toothpaste
- ☐ Soap
- ☐ Shampoo
- ☐ Hair dryer
- ☐ Personal first aid kit
- ☐ Other personal items & toiletries
- ☐ Allergy medication
- ☐ Headache/fever/pain meds
- ☐ Prescription medications

CLOTHING

- ☐ Shorts
- ☐ Sweatpants
- ☐ PJ's
- ☐ Hat
- ☐ Jeans
- ☐ Rain jacket
- ☐ Swimsuit
- ☐ Tennis shoes or walking shoes (close-toed shoes required)
- ☐ Water shoes
- ☐ Light jacket/fleece
- ☐ Attire for Talent Show, Western Dance, and Family Camp Sky Spies

MISCELLANEOUS

- ☐ Bible
- ☐ Flashlight
- ☐ Camera
- ☐ Journal
- ☐ Backpack or tote bag
- ☐ Fly fishing gear
- ☐ Bug spray
- ☐ Sunglasses
- ☐ Sun block
- ☐ Lip balm
- ☐ Water Bottle

WHAT NOT TO BRING

- Tobacco products
- Fireworks
- Illegal drugs
- Archery equipment
- Paintball guns or gear
- Skateboards
- Skeet shooting gear
- Alcohol
- Climbing gear
- Scooters
- Weapons
- Pets

FAMILY CAMP 2021 DATES AT HORN CREEK

Session 3	June 13 - June 19
Session 4	June 20 - June 26
Session 5	June 27 - July 3
Session 6	July 4 - July 10
Session 7	July 11 - July 17
Session 8	July 18 - July 24
Session 9	July 25 - July 31
Session 10	August 1 - August 7
Session 11	August 8 - August 14

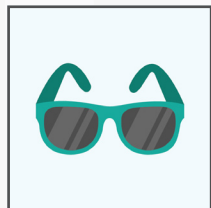
** Sky Ranch provides linens, pillows, wash cloths and bath towels. The Trading Post and Peaks Treats have a variety of sundries and snacks for purchase.*

Sky Ranch cannot be responsible for lost or broken articles. Please do not bring anything that would break easily or cause loss if misplaced.

DIRECTIONS

You will find maps for Sky Ranch Horn Creek on our website www.SkyRanch.org under the locations tab in the main menu. Horn Creek is off of Highway 69. There are signs that will help direct you to camp. Turn onto CR 140, then turn left onto Macey Ln (CR 129). Turn right on CR 130 and follow this all the way to camp. We do not recommend turning off of Highway 69 onto CR 130 because this section of road is not paved. If you are flying into Colorado, we recommend arriving at Colorado Springs Airport, which is two hours away.

CLIMATE AND WEATHER

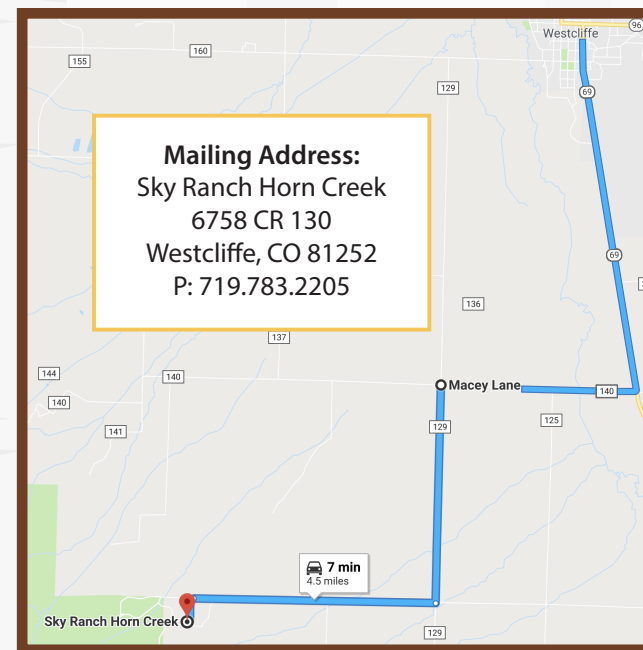


WEATHER – We enjoy over 300 days of sunshine every year and a cool, dry climate. Summer daytime highs are typically in the 70s or low 80s. Lows in the summer are in the 40s or even 30s. Temperatures at higher elevations are usually lower than in town. A warm jacket and/or sweater will be necessary for your visit during the summer.

Thunderstorms are typical daily occurrences during the summer, especially during July and August. Locally, we refer to this as the “monsoon” or rainy season. Stay off of ridges and away from open ground to avoid lightning strikes. Longer hikes are best started early in the morning so you can be down off the mountain when the lightning starts.

OUTDOORS – It is essential to wear eye protection, a hat, and sunscreen when outdoors. The sun is much more intense here than in areas of lower altitude. Insects and mosquitoes love Westcliffe, especially in summer. Be sure to pack insect repellent and use it frequently when you plan on being outdoors. While the waters are beautiful, we do not recommend drinking from the rivers, lakes, or streams.

ALTITUDE – Gains in altitude can affect anyone, especially when traveling above 7,000 feet. Sometimes, the effects can include: headaches, breathlessness, fatigue, nausea, vomiting, inability to sleep, or swelling of the hands, face, or feet. You can reduce your symptoms by avoiding strenuous activity for the first day or two of your visit, and **drinking extra water**. Check with your doctor before going to high altitude if you have a heart or lung condition.



HORN CREEK RANCH BANK - PLANNING AHEAD!

The **Trading Post** and **Peaks Treats** are two places on camp where you can purchase awesome souvenirs and delicious snacks for your family. While these shops make the Sky Ranch experience better, we also know it can be a hassle to carry cash while at camp. To simplify things, we provide wristbands for each member of your family. These wristbands will be linked to your credit card on file. This allows every member of your family to make purchases through the week without carrying a wallet, cash or card.

We ask that younger children make purchases only with parent approval. At the end of the week, we run all purchases made to your credit card on file. You are welcome to carry cash or use a credit card if you would prefer.



DURING CAMP WEEK

Sunday - Arrival day

4:30 pm	Check-In
6:00 pm	Dinner
7:00 pm	Welcome orientation
8:00 pm	Hanging log

A Day at Camp

8:30 am	Breakfast
9:15 am	Family Devotions
9:30 am	Round Up - more details on page 9
10:30 am	Free time*
12:30 pm	Lunch
1:30 pm	Afternoon activities
6:00 pm	Dinner
7:00 pm	Night Events - more details on page 8
9:00 pm	Free time

*Wednesday (Lodge) and Thursday (Meadows) is our off-camp adventure day. See page 10 for recommendations.



ACTIVITES AT CAMP

All activities are optional. You are free to leave camp whenever you would like or need to. Maintaining a safe and fun environment is paramount to Sky Ranch. For this reason we ask that you please do not play on or enter any activity site unless staff is present.

REC CENTER (Bowling, climbing wall, basketball, a walking track, and racquetball)

DISC GOLF

TRAIL RIDES* (Kids must be 8 years old. We will have pony rides and games for younger kids to enjoy the horses. Weight maximum: 250 lbs.) - *Additional cost to participate*

ALPINE SWING*

ZIPLINES* (Limit of 50-250 lbs.)

TARGET RANGE*

POOL AND WATERSLIDES

FISHING

CRAFTS

YEAR-ROUND TUBING HILL*

*Closed-toe shoes required.



NIGHT EVENTS

FAMILY CAMP SKY SPIES – Come dressed in your most sly or outrageous Spy outfit and get ready for a night of secret missions and fun spy games!

WESTERN NIGHT – Starting with dinner and ending with western dancing – bring your cowboy boots and duds!

HORN CREEK'S GOT TALENT NIGHT – Talent Night is your chance to be a star! Singing, dancing, skits – get creative and have fun!

KID'S NIGHT – Wednesday (Meadows), Thursday (Lodge): Kid's Night at camp is a blast! Parents have the option of a private picnic around camp with a delicious basket of food provided, or going into town for dinner. Some parents go in groups, some make it a date night. Kids play at camp with counselors and staff, have dinner together, and watch a movie.

FAMILY BLESSING NIGHT – Friday night is a very special evening to end an extraordinary week. We will join together for a time of worship and Family Blessing. This night concludes with a campfire and special time of sharing what God has done.

***A note about costumes:** Some families go all out. Some come as they are. Either is great! We encourage you to do what fits your family best.



OTHER IMPORTANT THINGS TO KNOW

Our staff is here to serve you with excellence and make your week of Family Camp as enjoyable and meaningful as possible. A few helpful things to remember:

COVID-19 – To learn about how Sky Ranch is mitigating the spread of COVID-19, refer to our website at www.skyranch.org/pages/covid19

HORN CREEK IS YOUR HOME FOR THE WEEK

Check-in & Out – Check-in begins at 4:30 pm on Sunday and check-out is at 9:00 am the following Saturday. If you are arriving late, please let us know.

Linens – All bedding, towels, and wash cloths are provided. If your bedding needs to be cleaned or changed, please let us know. We visit your cabin or room to take the trash out and provide fresh towels on Wednesday.

Laundry – If you need to do laundry, we have a laundry facility on camp that you can use. It is stocked with everything you may need.

Assistance – If you need assistance during non-business hours, please visit the concierge desk and use the radio there to inform the Family Camp Manager of your needs.

Dietary Restrictions – If you or your child has any dietary restrictions, please let us know at least one week prior to your arrival, so we can prepare for you. Please contact Ryan Kenyon at Ryank@SkyRanch.org.

CAMP LIFE

Round Up – In the mornings throughout the week, we offer Gathering Time for both kids and parents. Kids connect with other kids through an age-appropriate Bible study, and parents have an informal 'round table' biblical discussion led by our host couple. This year's discussion will center around marriage and other godly relationships.

Camp Store – The Trading Post is located in the Recreation Center, and is fully stocked with souvenirs, Sky Ranch Horn Creek apparel, and special treasures! Nearby, you'll find Peak Treats – the best place on the mountain to find your favorite snacks, smoothie, and coffee drinks!

OFF-CAMP ADVENTURE DAY

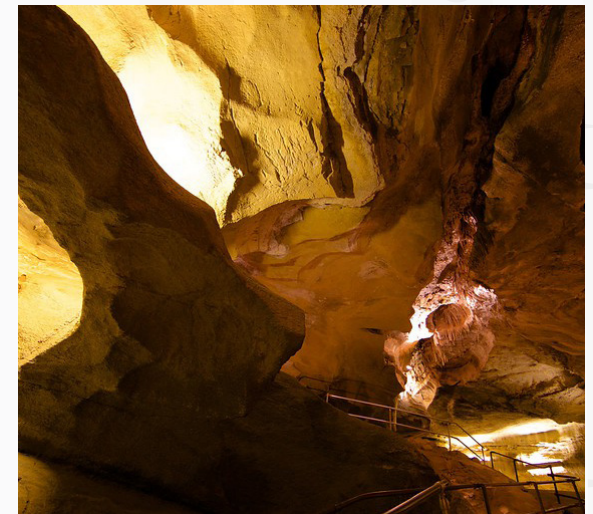
Wednesday (Lodge) and Thursday (Meadows), your family will have the opportunity to spend the day off-camp together. There are many things to do in and around the area. We've listed a few below. You will receive a comprehensive list upon arrival at camp. Visit townofwestcliffe.com for more info.

WHITEWATER RAFTING – If your family is up for a whitewater adventure, think about signing up for a trip on the Arkansas River. Weight requirement is dependent on river levels. Pricing: \$70.00 for adults, \$57.00 for children. We can help you make reservations when you arrive.

ROYAL GORGE – Visit the world's highest suspension bridge that spans a quarter mile across this canyon. Enjoy amazing panoramic views from almost 1000 ft above the river. A little over an hour from camp, the park opens at 7 am with attractions opening at 10 am. Cost is \$27 for adults and \$22 for children (6-12).

MOUNT PRINCETON HOT SPRINGS – Take a relaxing dip in these natural hot springs set in the beautiful mountains. Just south of Buena Vista, treat yourself in these wonderful waters. The hot springs are 1 1/2 hours from camp. They're open from 9 am-10 pm and cost is \$20 for adults and \$15 for children (4-15).

CAVE OF THE WINDS – (We suggest making a reservation) Step inside the caves of the Rockies and experience the coolness of underground. With a variety of tour options and adventure rides available, you're sure to be wowed. A two-hour drive from camp, tours start at 9 am. The cost is \$22 for adults and \$16 for children (6-12). Visit caveofthewinds.com to book your tour.





6758 COUNTY ROAD 130
WESTCLIFFE, CO 81252
719.783.2205 | WWW.SKYRANCH.ORG