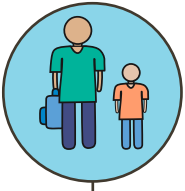


WHAT SKY RANCH IS DOING TO PREVENT THE ENTRY AND SPREAD OF COVID-19

BEFORE CAMP



Let's do this together!

Before you even come to camp, let's work together to minimize risk:



Protect yourself and others by:
Washing your hands often
Avoiding close contact with people who are sick
Putting distance between yourself and others outside your home as camp approaches.
Don't come to camp if you are ill



Follow travel restrictions
Texas, Colorado, and Oklahoma



Practice physical distancing for 14 days



Enhanced Employee Training with COVID-19 specific content



Heightened Health Screenings before entry into camp

- ✓ For both campers and employees
- ✓ Health Questionnaire to be completed within 24 hours of camp arrival - If needed, follow up assessment with a healthcare professional
- ✓ High-Risk Individuals: Campers who are at higher risk of serious illness with COVID-19 will need a note from their doctor to attend

ARRIVALS & DEPARTURES



Modified drop off & pick up

- ✓ Reduce number of guests at camp by limiting to one adult per camper and extending drop off window to stagger arrivals
- ✓ Health Screening, including temperature checks of camper and family upon arrival - If needed, follow up assessment with a healthcare professional
- ✓ Encouraging camper families to follow physical distancing and wear face coverings when appropriate



Cave Springs specific

- ✓ In addition to health screenings, bus transportation will be cleaned and disinfected by the vendor before use, and campers will travel by cabin groups.

AFTER CAMP

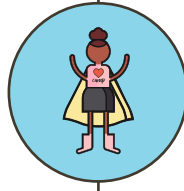
Intensified cleaning

- ✓ More time to clean and disinfect camp by shortening sessions.

Limit interaction

- ✓ With others after camp and consider avoiding those who are at higher risk of serious illness with COVID-19

DURING CAMP



Camper interaction



Camper orientation providing information on COVID-19 and the impact at camp



Daily temperature checks for both campers and employees



Emphasis on handwashing (*hand sanitizer when soap and water are unavailable*), and respiratory etiquette



Physical Distancing - We will be organizing cabins into cabin groups (what the state is calling a "cohort"):
Adjusted activity and meal schedules based on the cabin groups
Eliminating or modifying large group programming
Emphasis on outdoor programming when feasible



Face Coverings:

Will not be required when interacting with their own cabin group
Will be used when physical distancing from other cabin groups is not possible
Will be used by employees when unable to maintain physical distancing



Facilities



Routine Cleaning and Heightened Disinfecting, including activities and equipment



Emphasis on head to foot bed layouts in camper cabins



More handwashing and hand sanitizer stations



Signage posted to reinforce important behaviors



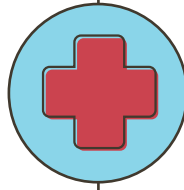
Updated Health Center layout will reduce exposure to others in camp community needing health care



Altered Food Service operations to eliminate or reduce contact of frequently touched objects



Increased visitor restrictions



Response in the case of illness

- ✓ Updated Health Center Policies, Procedures and Protocols with COVID-19 specific information
- ✓ Isolation and Quarantine of campers and employees with COVID-19 like symptoms. Campers will be isolated, assessed, and if appropriate sent home
- ✓ Clear communication to all involved
- ✓ Will coordinate with local and state health departments

GuestServices@SkyRanch.org

